

THE NEW OPEN TYPE FONT



*designed by*  
*James Grieshaber*  
*exclusively for*  
*P22 type foundry*  
*International*  
*House of*  
*Fonts*



## OPERINA PRO

*Operina* is based on a 16th-century lettering model of the scribe Ludovico degli Arrighi that he used in his 1522 instructional lettering book, "La operina da imparare di scrivere littera cancellarescha." This book is considered the earliest printed examples of Chancery Cursive.

Rather than try to reproduce a perfect, smooth, type-like version of Ludovico's hand, which has been attempted in the past, the designer opted to leave in some rough edges and, thereby, create a look that mimics the endearing artefacts of quill and ink lettering on parchment.

A B C D E F G

a b c d e f g h i j k l m n

A B C D E F

A B C D E F

## OPERINA PRO

### ALTERNATES

This is only a sample of all the available alternates. There are at least 2 alternates for every character in the Latin set.

a b c d e f g h i j k l m n

a b c d e f g h i j k l m n

a b c d e f g h i j k l m

## CONTEXTUAL ALTERNATES

When you use OPERINA PRO in OpenType savvy applications with *Contextual Alternates* and *Ligatures* turned on (usually on by default) it starts to take on the look of hand lettering.

But if you prefer the original OPERINA look, you can turn the *Contextual Alternates* and *Ligatures* features off. This allows you the control to edit the look of the font yourself by picking and choosing only the alternate glyphs you want, through the Glyphs Pallet in CS applications.

## SWASH

When you turn the *Swash* feature on, swash end forms will be substituted for the last letter of each word, some swash beginning forms will appear, and swash caps will be substituted at the beginning of each sentence. At this point, OPERINA begins to take on the look of a hand crafted text.

The *Discretionary Ligatures* feature adds in even more special letter combination glyphs, such as *ſt* and *ct*, that Arrighi used in his lettering.

## SMALL CAPS

Because the Cap Height in OPERINA is rather short compared to the x-height, the small caps feature has been designed to use the alternate swash caps as the upper case letters and the capitals as the small caps for an interesting titling effect.

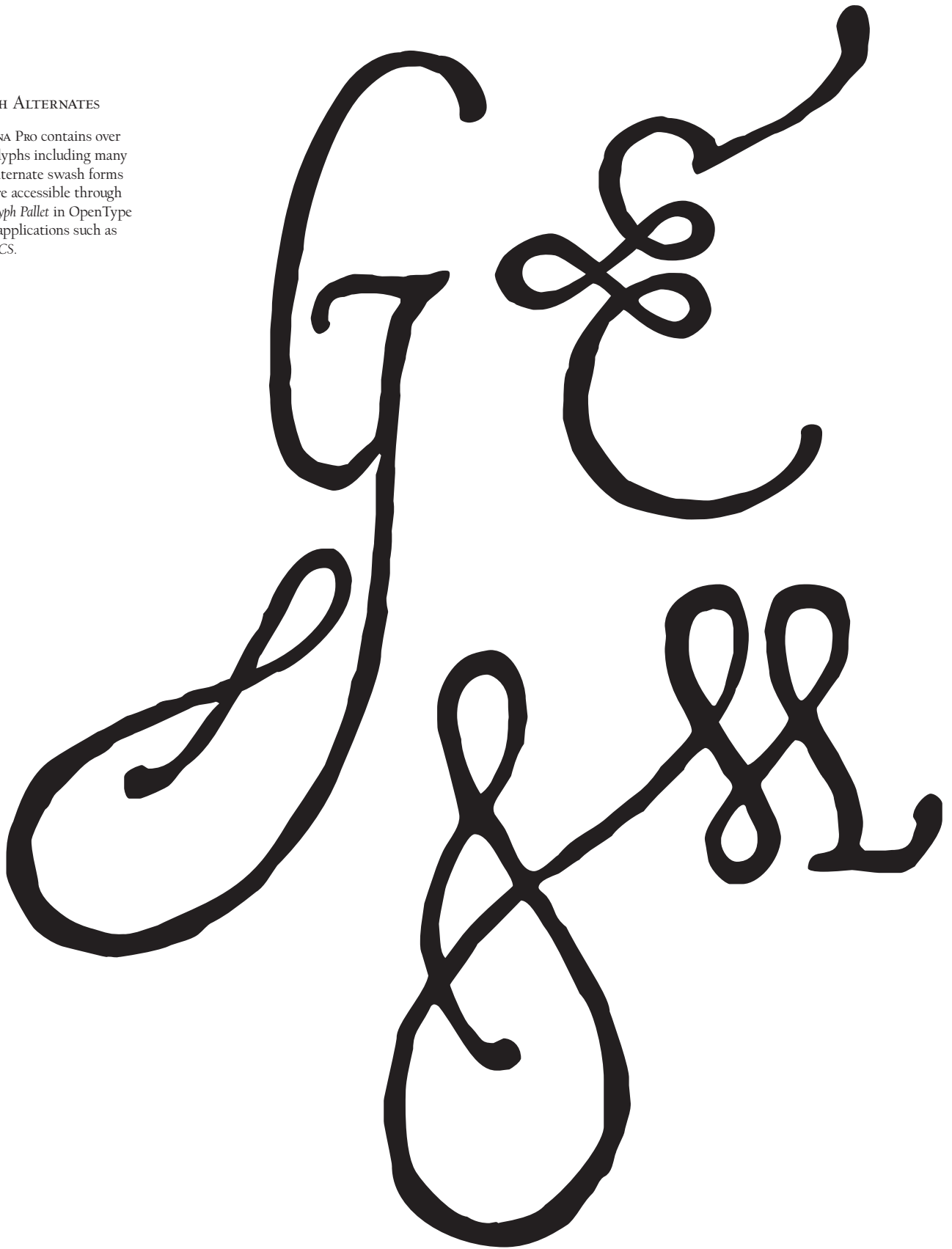
*But I must explain to you how all this mistaken idea of denouncing pleasure and praising pain was born and I will give you a complete account of the system, and expound the actual teachings of the great explorer of the truth, the master builder of human happiness. No one rejects, dislikes, or avoids pleasure itself, because it is pleasure, but because those who do not know how to*

*But I must explain to you how all this mistaken idea of denouncing pleasure and praising pain was born and I will give you a complete account of the system, and expound the actual teachings of the great explorer of the truth, the master builder of human happiness. No one rejects, dislikes, or avoids pleasure itself, because it is pleasure, but because those who do*

**BUT I MUST EXPLAIN TO YOU HOW ALL THIS  
MISTAKEN IDEA OF DENOUNCING PLEASURE AND  
PRAISING PAIN WAS BORN. AND I WILL GIVE  
YOU A COMPLETE ACCOUNT OF THE SYSTEM, AND  
EXPOUND THE ACTUAL TEACHINGS OF THE GREAT  
EXPLORER OF THE TRUTH. THE MASTER BUILDER**

## SWASH ALTERNATES

OPERINA Pro contains over 1200 glyphs including many new alternate swash forms that are accessible through the *Glyph Pallet* in OpenType savvy applications such as *Adobe CS*.



## CZECH

OPERINA Pro contains all Central European diacritical glyphs and alternates, which makes it usable for most Latin script based languages.

Ústřední kancelář továrny Rossum s Universal Robots. Vpravo vchod. Okny v průčelní stěně pohled na nekonečné řady továrních budov. Vlevo další ředitelské místnosti. Domin (sedí u velkého amerického psacího...

## GERMAN

Er besucht, wie er mir erzählt hat, seit er hier zur Kriegsschule commandirt ist, die Gesellschaften der haute finance sehr fleißig und amüsirt sich sehr gut dort. Er wird gewiß auch heute hier beim...

## ICELANDIC

Rússar kváðu hafa farið á skinnbátum upp eftir fjví, unz þeir komu að vatni fjví, er Flavéjno heitir. Þaðan er vegr eigi langr til Koparfjós. Þvaer ár stórar falla að austanverðu í Cooks-flóa. Í annari þeirra er...

## POLISH

W lipcu ojciec mój wyjeżdżał do wód i zostawiał mnie z matką i starszym bratem na pastwę białych od zaru i oszołamiających dni letnich. Wertowaliśmy, odurzeni światłem, w tej wielkiej księdze...

## SPANISH

Duelos y quebrantos los sábados, lantejas los viernes, algún palomino de añadidura los domingos, consumían las tres partes de su hacienda. El resto della concluían sayo de velarte, calzas de velludo para las fiestas,

## SWEDISH

Den unge, hyggelige sergeanten hade på föräcket varseblivit henne, som skilts ifrån sin moster; och det väckte hans uppmärksamhet, att hon vid avresan stått i en liten nått fruntimmershatt av vit kambrik, men efter

## RUSSIAN

OPERINA Pro includes a full Cyrillic set of glyphs, which makes it usable for most major Cyrillic script based languages.

Президент Украины Виктор Ющенко обещает наказать тех, кто причастен к разбазариванию армейской собственности. «Даю слово=люди, которые это сделали, понесут наказание»,

## GREEK

OPERINA Pro includes a full Greek set of glyphs as well.

Χαρτιού καλύτερο υψηλότερη εγώ οι, στη αυτός προσπαθήσεις χαρακτηριστικών αν. Νέα μέσης μαγικά μικρήs οι, εδώ να χρονοδιαγράμματος βαθμό τελευταία, γίνεται

#### ROMAN NUMERALS

When the *tilting alternates feature* is on in OPERINA PRO, numbers will be transformed into their Uppercase Roman Numeral equivalents. Use a combination of *tilting* & *oldstyle* features to access the lowercase Roman Numerals.

MMVI · VII · cxxiv

#### PROPORTIONAL LINING

These *ranging figures* are for use in titling or where cap height numbers are appropriate. These are the default numbers in OPERINA PRO.

0123456789

#### PROPORTIONAL OLDSTYLE

These *text figures* are designed to match the lower case and work well in running text.

0123456789

#### OLDSTYLE SWASH

These *figures* are designed to match the exuberance of some of the alternate and swash letter forms.

0123456789

#### TABULAR LINING

These figures are monospaced to work well in tabular or mathematical settings. The *slash zero* is provided in this format.

0123456789ø

#### TABULAR OLDSTYLE

These figures are monospaced to work well in tabular or mathematical settings.

0123456789

#### FRACTIONS

When the *fraction feature* is on in OPERINA PRO, numbers before and after slashes automatically use the *numerator* and *denominator* figures to give the appearance of a more appropriate fraction.

1/2 3/4 7/12 23/120

#### SUPERIOR & INFERIOR

Also known as *Superscript* and *Subscript*, these numbers are used for notation.

012345 231456