



CYPHER *a display font system from Typeco*

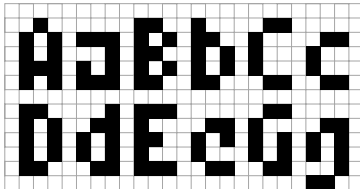
CYPHER TWENTY-FOUR FONTS

Four widths each with: Light | Light Italic | Regular | Regular Italic | Bold | Bold Italic

Cypher is a technological looking face that attempts to employ the Gestalt principal of closure in it's design. It may, at larger sizes look like some sort of code or a bunch of dots and dashes, but when viewed at smaller sizes it falls together into legible words.

The narrowest form of this font family was first inspired by an experiment to try to make a legible upper and lower alphabet with the smallest possible grid that would still describe the letterforms. The original conclusion was that it could be done within a 3x6 grid.

BLOCK BABY EXPERIMENTAL FONT CIRCA 1990.



This made a fun design exercise, but it makes a lousy font. The grid was expanded a bit for aesthetic reasons, but not restricted too severely and so occasionally goes wider for the certain letterforms. From this a whole family of widths and weights was born.

BASIC CHARACTERS FOR CYPHER 4 REGULAR

ABCDEFGHIJKLM
NOPQRSTUVWXYZ
abcdefghijklm
nopqrstuvwxyz
123456789
(@ \$ % & * + , - . / : ; ?)
[\] ^ _ ` { | } ~ ! " # \$ % & ' () * + , - . / : ; ?
(A Ç È Ñ Ò Ó Ô Ù Ú Û Ü Ý Þ ß à á â ã)
. , : ; ' - _ = + * / < > [] { } ~ ! " # \$ % & ' () * + , - . / : ; ?

Annition

CYPHER 4 REGULAR

Encryption

CYPHER 3 LIGHT

ELECTRONIC

CYPHER 5 BOLD

Original Equipment Manufacturer

CYPHER 3 BOLD

t-tairifamic

CYPHER 7 LIGHT

What am I looking at? Try squinting your eyes.

CYPHER 4 REGULAR

WIF: TUAL

CYPHER 7 REGULAR

cypher also cypher-1. The mathematical symbol (0) denoting absence of quantity;

CYPHER 3 LIGHT - 9 PT

zero. 2. An Arabic numeral or figure; a number. 3. One having no influence or

CYPHER 3 LIGHT ITALIC - 9 PT

value; a nonentity. 4.a. A cryptographic system in which units of plain text of

CYPHER 3 REGULAR - 9 PT

regular length, usually letters, are arbitrarily transposed or substituted

CYPHER 3 REGULAR ITALIC - 9 PT

according to a predetermined code. 4b. The key to such a system. 4c. A message

CYPHER 3 BOLD - 9 PT

message written or transmitted in such a system. 5. A design combining or inter-

CYPHER 3 BOLD ITALIC - 9 PT

cypher also cypher 1. The mathematical symbol (0) denoting

CYPHER 4 LIGHT - 9 PT

absence of quantity; zero. 2. An Arabic numeral or figure; a number

CYPHER 4 LIGHT ITALIC - 9 PT

3. One having no influence or value; a nonentity. 4.a. A crypto-

CYPHER 4 REGULAR - 9 PT

graphic system in which units of plain text of regular length,

CYPHER 4 REGULAR ITALIC - 9 PT

usually letters, are arbitrarily transposed or substituted accord-

CYPHER 4 BOLD - 9 PT

ing to a predetermined code. 4b. The key to such a system. 4c. A

CYPHER 4 BOLD ITALIC - 9 PT



h j n y j

CYPHER 4 REGULAR ITALIC

h j n y j

CYPHER 3 LIGHT ITALIC

PROTOCOLS

CYPHER 5 BOLD ITALIC

Information Super Highway

CYPHER 5 BOLD ITALIC

h j n y j

CYPHER 7 LIGHT

I am Electro. If you use me well, I can be your slave.

CYPHER 3 REGULAR ITALIC

REALITY

CYPHER 7 REGULAR ITALIC

cypher also cypher 1. The mathematical symbol (0)

CYPHER 5 LIGHT - 9 PT

denoting absence of quantity; zero. 3. An Arabic numeral or

CYPHER 5 LIGHT ITALIC - 9 PT

figure; a number. 3. One having no influence or value; a

CYPHER 5 REGULAR - 9 PT

nonentity. 4.a. A cryptographic system in which units of plain

CYPHER 5 REGULAR ITALIC - 9 PT

text of regular length, usually letters, are arbitrarily trans

CYPHER 5 BOLD - 9 PT

posed or substituted according to a predetermined code.

CYPHER 5 BOLD ITALIC - 9 PT

cypher also cypher 1. The mathematical symbol

CYPHER 7 LIGHT - 9 PT

denoting absence of quantity; zero. 3. An

CYPHER 7 LIGHT ITALIC - 9 PT

Arabic numeral or figure; a number. 3. One

CYPHER 7 REGULAR - 9 PT

having no influence or value; a nonentity. 4.a. A

CYPHER 7 REGULAR ITALIC - 9 PT

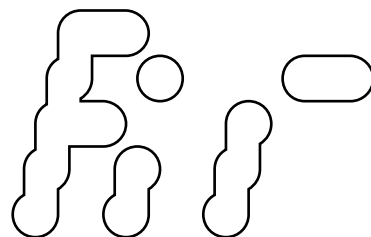
cryptographic system in which units of plain

CYPHER 7 BOLD - 9 PT

text of regular length, usually letters, are

CYPHER 7 BOLD ITALIC - 9 PT

Rather than simply obliquing for italics, a true italic of sorts was created by horizontally shifting dots on the vertical strokes.



CYPHER 3 REGULAR ITALIC

Cypher is a versatile family of 24 fonts—4 widths, each with 3 weights and their accompanying italics.

h j n

3 LIGHT

3 REGULAR

3 BOLD

h j n

3 LIGHT ITALIC

3 REGULAR ITALIC

3 BOLD ITALIC

E:h E:b E:b

4 LIGHT

4 REGULAR

4 BOLD

E:h E:b E:b

4 LIGHT ITALIC

4 REGULAR ITALIC

4 BOLD ITALIC

h j n

5 LIGHT

5 REGULAR

5 BOLD

h j n

5 LIGHT ITALIC

5 REGULAR ITALIC

5 BOLD ITALIC

h j n

7 LIGHT

7 REGULAR

7 BOLD

h j n

7 LIGHT ITALIC

7 REGULAR ITALIC

7 BOLD ITALIC

OTHER FONT FAMILIES FROM TYPECO

Chunkfeeder

6 FONTS

Aa Aa
Bb Bb
Cc Cc

Cusp

18 FONTS

Aa Aa Bb Bb Cc Cc Dd Dd
Ee Ee Ff Ff Gg Gg Hh Hh

Glyphic neue

6 FONTS

Aa Aa Bb Bb Cc Cc

Gothic Gothic

3 FONTS

Aa
Bb
Cc

SUPER DUTY

25 FONTS

Aa Aa Bb Bb Cc Cc Dd
Aa Aa Bb Bb Cc Cc
Aa Aa Bb Bb Cc Cc
Aa Aa Bb Bb Cc Cc

Trapper

8 FONTS

Aa Aa Bb Bb
Aa Aa Bb Bb



Typeco
www.typeco.com
contact@typeco.com

All design and typefaces by Typeco/James Grieshaber. ©2006.
Chunkfeeder, Cusp, Cypher, Glyphic Neue, Gothic Gothic, Super
Duty and Trapper are trademarks of Typeco. All rights reserved.